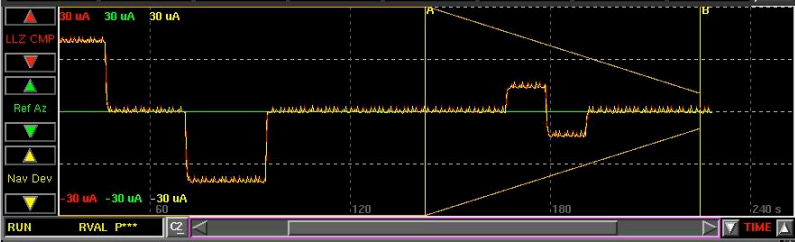


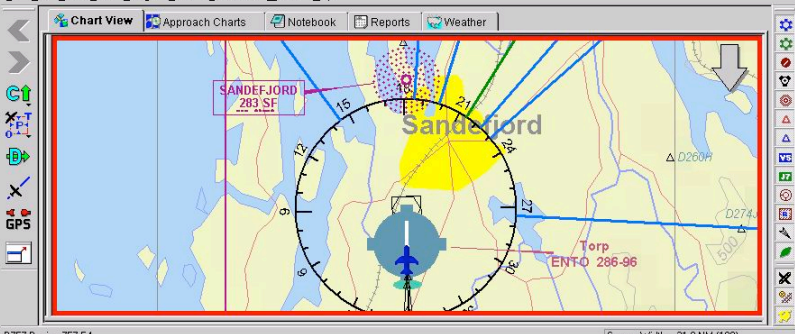
Options	FIP	Proc	Fac	Ref Src	TX no	Az Offset	Help
09:29:33 N	LLZ APP	Torp	GPS	1	0.0		9.12.02
Close	TRDV(uA)	50	LDEV(uA)	50	275	LFLG(uA)	375
Prev/Next	0		0			475	0
Calc	0		0			361	100
	0		0			139	200

Facility:	Rwy18	Storage file:	0212.Torp.LA00138
Dist:	0.415	Compare:	-0.431
Speed:	150.000	90Hz (%):	20.073
Fac ID:	ENTO	150Hz (%):	20.096
DME ID:		TTS:	0.100
		Ref Az (o):	0.000
		Ref El (o):	2.997
		Alt (Ft):	181.416
		Hdg (o):	0.000
		T**:	GVAL



09:25:18 System variables saved in flight dir.  
 09:25:18 Run file opened for write. 8384 MB free.



Ref. Alt: 180 | CRS 180 | DME 133.7 | ILS2

Ref dist 00.4 nm  
 Ref speed 150 kts

MKR 1: Offset: Az 0 uA, El 0 uA  
 MKR 2: Offset: Az 0 uA, El 0 uA

ADI: ON  
 OFF

NAV: ILS 2  
 VOR: OFF

CRS: - | +  
 TCN: OFF  
 ADF: OFF

PRESET

SOURCE PRESET: LLZ [Save]

SOURCE

Channel 1: LLZ 90 / VOR FM NAV 2  
 Channel 2: LLZ 150 / VOR AM NAV 2

Timescale: [Yellow bar]

FFT

Spectrum: OFF | Frequency (MHz): 110.00 | Default  
 Amplitude: [Yellow bar]